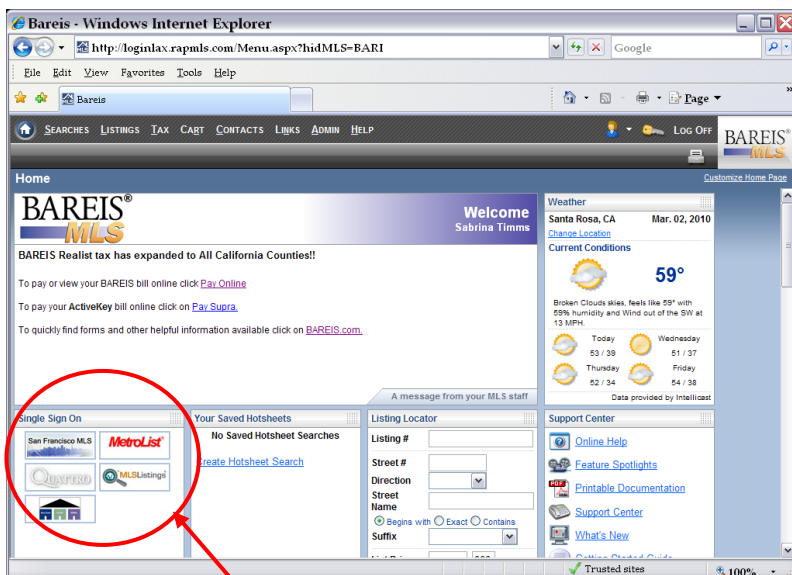


How do I access other counties?

The original “Quattro” data share program that launched in 2007, gave BAREIS MLS® members direct access into the MLS for San Francisco Association of Realtors® and the Sacramento area thru MetroList®. Access to the South Bay counties was added when MLS Listings Inc® joined the project in early 2009. Access to the East Bay counties of Contra Costa and Alameda became available in mid March 2010.

A BAREIS MLS® member can link into a reciprocal MLS and enter listings for that area, run comp searches, add photos, tours, etc. Simply log in to your BAREIS site and click on the logo for the reciprocal MLS you would like to go to. **Please Note: When you are in a reciprocal MLS, you must abide by the Rules and Regulations of that MLS.*



Click on the logo for the MLS that you wish to link to.

Please note: For info on using your lockbox and lockbox key in other counties, please go to www.bareis.com > **Lockboxes** > **Use of Lockboxes with another MLS.**