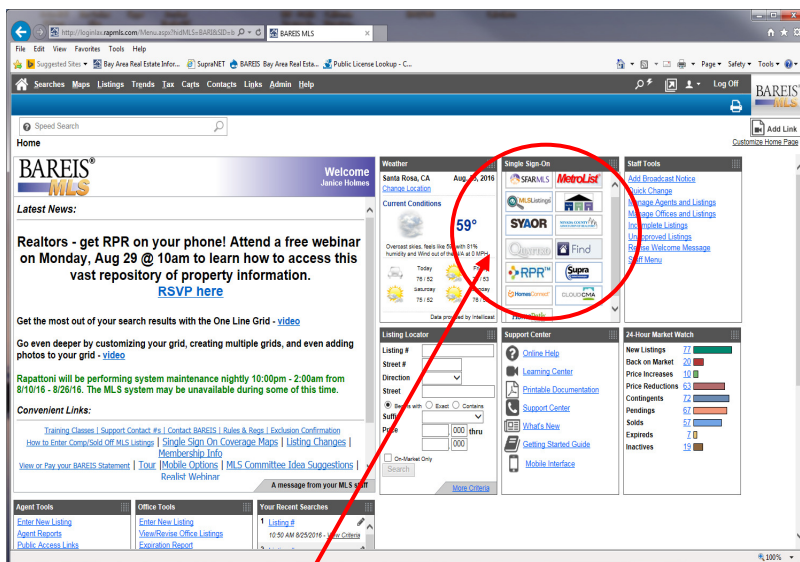


Northern California Data Share Program

What MLSs do I have access to? The original “Quattro” data share program launched in 2007. Quattro provides BAREIS MLS® members direct access to the San Francisco Association of Realtors® MLS and MetroList®, which covers the Capitol Region and the heart of San Joaquin Valley. Access to the Peninsula and South Bay counties was added when MLSListings® joined the project in early 2009. The East Bay counties became available in mid March 2010. Sutter-Yuba counties joined the effort in September 2011.

How do I link to another MLS? A BAREIS MLS® member may link to a reciprocal MLS and enter listings for that area, run comp searches, add photos, tours, etc. Simply log in to BAREIS MLS® and click on the logo for the reciprocal MLS you would like to use.

***Please Note: When you are using a reciprocal MLS, you must abide by the Rules and Regulations of that MLS.**



Click on the logo for the MLS you wish to link to.

Do I also have lockbox access? Yes, through our Northern California cooperative key program. For info on using your lockbox and lockbox key in other counties, please go to <http://bareismls.info/keycoop>

