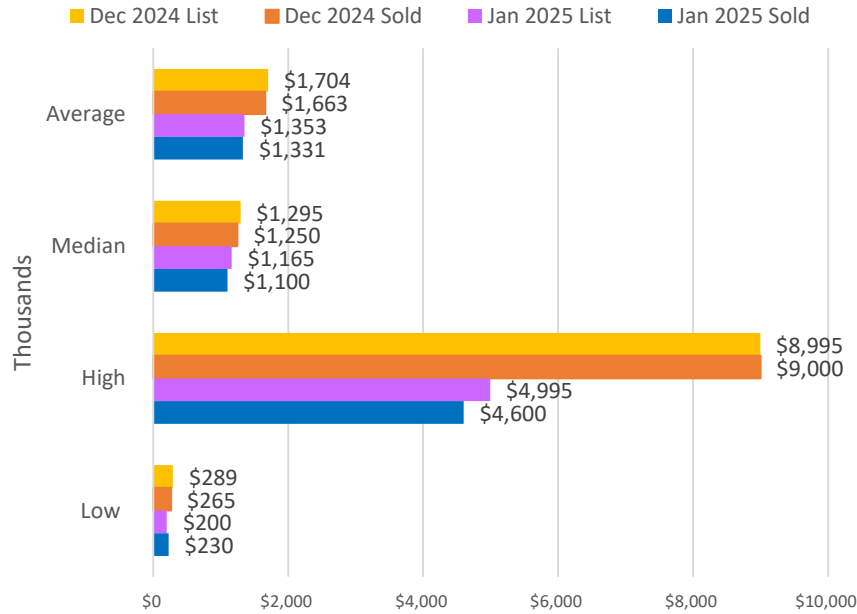


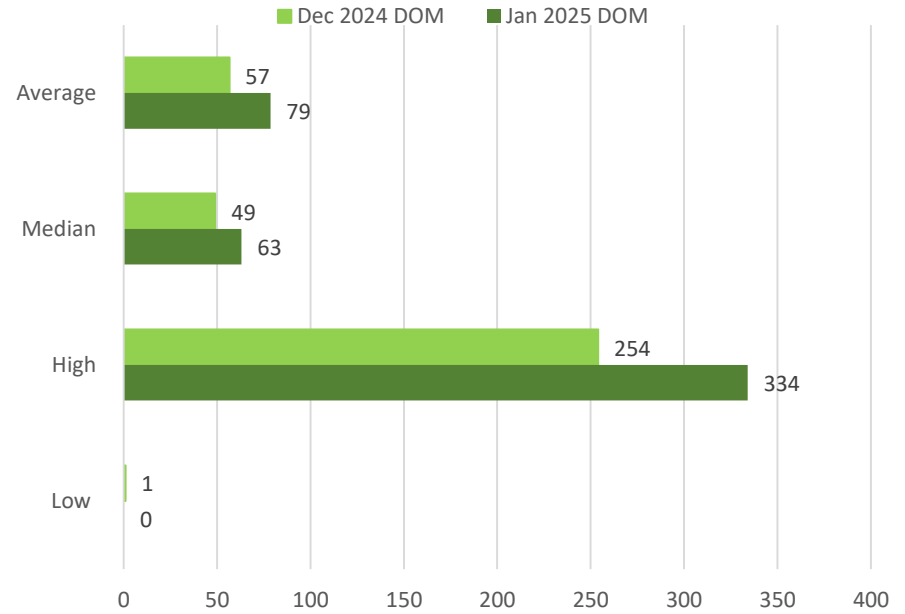
BAREIS MLS Marin County Two-Month Closed Sales Report

December 2024 & January 2025 Residential: SFR, Condo/Co-op, Farms & Ranches, Mobile & Floating Homes

December 2024 & January 2025 List & Sold Price in \$ Thousands



December 2024 & January 2025 Days on Market



January 2024

Total Properties Sold		90	
	List Price	Sold Price	DOM
Average	\$1,452,931	\$1,419,000	65
Median	\$1,295,000	\$1,284,500	47
High	\$5,995,000	\$5,300,000	266
Low	\$105,000	\$105,000	0
¹ Adj Average	\$1,416,634	\$1,389,829	64

January 2025

Total Properties Sold		75	
	List Price	Sold Price	DOM
Average	\$1,353,115	\$1,330,588	79
Median	\$1,165,000	\$1,100,000	63
High	\$4,995,000	\$4,600,000	334
Low	\$200,000	\$230,000	0
¹ Adj Average	\$1,319,022	\$1,300,878	77

December 2023

Total Properties Sold			
	List Price	Sold Price	DOM
Average			
Median			
High			
Low			
¹ Adj Average			

December 2024

Total Properties Sold		157	
	List Price	Sold Price	DOM
Average	\$1,704,446	\$1,662,619	57
Median	\$1,295,000	\$1,250,000	49
High	\$8,995,000	\$9,000,000	254
Low	\$289,000	\$264,500	1
¹ Adj Average	\$1,666,542	\$1,624,301	56

Statistics reported from BAREIS MLS® February 14, 2025

Information herein believed reliable but not guaranteed. ¹ Adjusted average does not include the high and low sale data.

Copyright © 2025 by Bay Area Real Estate Information Services, Inc. All rights reserved. BAREIS.com